

MEDICAL CHALLENGES SERIES

Conference in Antarctica

EMERGENCY & WILDERNESS MEDICINE: WHERE EVERY DECISION COUNTS!

11 days/10 nights

28 February – 9 March 2008

Departs and finishes Ushuaia, Argentina

Abundant wildlife, ancient glaciers, vast icy plains and giant blue icebergs – be one of the lucky few to have explored this pristine continent. Join us aboard our world-leading expedition vessel, the Peregrine Voyager, for this special symposium and a once-in-a-lifetime adventure.



The wilderness has become a magnet for tourism. The settings are often imposing, unpredictable and a breeding ground for health risks.

Combining plenary and case-based interactive sessions, our expert medical team will explore many of the most challenging environmental and wilderness emergencies.

This is a unique opportunity to investigate today's greatest medical challenges whilst discovering Antarctica through Peregrine's world-leading program of exploration by Zodiac inflatable boat, on foot or sea kayak, in the company of expert guides, lecturers and naturalists.

Please contact us for more information or to register for the voyage and conference.

Peregrine

The Spirit of Adventure



Topics

Emergency & Wilderness Medicine conference topics will include, but are not limited to:

- HIGH ALTITUDE-HAPE, HACE
- HYPOTHERMIA AND COLD INJURIES
- THE CRITICAL AIRWAY
- MEDIVAC PROTOCOLS
- TRAUMA IN EXTREME CONDITIONS
- TOXIC EXPOSURES
- VENOMOUS EXPOSURES
- PITFALLS IN TOXICOLOGY

For a detailed program schedule please visit www.peregrineadventures.com/antarctica/specialist_voyages.asp

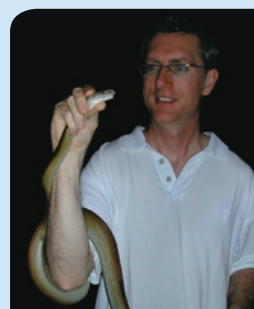


Guest Faculty

Ivy Cheng will be moderator and host.



Ivy Cheng is an Emergency and Sports Medicine consultant who has won acclaim for clinical skills, program development and teaching. She has volunteered her medical skills for remote land and ship-based excursions.



Ken Winkel is an international expert in toxicology and Tropical disease. He is internationally renowned for his research, publications and education in toxicology and envenomation.



David Tingay is a Neonatologist, Respiratory Physiologist and medical officer for Victorian Alpine Search and Rescue. He is an expedition medicine consultant to adventure travel and guiding companies. With skill as a technical climber, he was a member of successful expeditions to Antarctica, Makalu and Everest.



Ken Zafren is a world leader in Wilderness Medicine and a specialist in Emergency Medicine. He is the Associate Medical director of the Himalayan Rescue Association and continues to set medical standards for remote health and trauma services.



Itinerary

Package Itinerary

Ex Sydney

TUESDAY 26 FEBRUARY

Fly from Sydney to Buenos Aires, arriving on the same day. A Peregrine representative will transfer you from the airport to your hotel. Spend the night in this vibrant, cosmopolitan city.

WEDNESDAY 27 FEBRUARY

After breakfast (included) transfer to the airport and fly to Ushuaia, the southern most city in the world and departure point for your Antarctic voyage. Transfer from the airport to your hotel and spend the night in Ushuaia.

THURSDAY 28 FEBRUARY – SATURDAY 8 MARCH

After breakfast (included), spend time at your leisure in Ushuaia, then in the late afternoon board the *Peregrine Voyager*. Set sail for the Antarctic Peninsula in the early evening by charting a course through the Beagle Channel. Cross the Drake Passage and the Antarctic Convergence. Cruise among the volcanic South Shetland Islands and the waterways of the Antarctic Peninsula. Frequent excursions by inflatable Zodiac boats and landings on the continent will take you up close to whales, Weddell and elephant seals, rookeries of gentoo, chinstrap and Adelie penguins and an array of bird life including the majestic albatross. An informal education program led by Peregrine's Polar experts will be held onboard (in addition to the conference program). Round Cape Horn on the return crossing.

SUNDAY 9 MARCH

Arrive back in Ushuaia in the early morning and transfer from the pier to the airport for your flight to Buenos Aires and then onto Sydney.

TUESDAY 11 MARCH

Arrive in Sydney.

For detailed *Antarctic Explorer* trip notes visit www.peregrineadventures.com/trips/ppex

MEDICAL CHALLENGES SERIES



VOYAGE ONLY FROM A\$10,370 * EX SYDNEY PACKAGE FROM A\$13,420**

**Conference registration fee: A\$1260 per person (in addition to the voyage fare or package price).
26 hours of CME credits will be applied for.**

Our Medical Challenges Series departures are always popular. Please book early to secure your place.

* From price is per person based on a twin share, main deck cabin on the 10-night *Antarctic Explorer* voyage departing 28 Feb 2008. Price includes arrival and departure transfers in Ushuaia and fuel surcharge as well as all voyage inclusions, as detailed in Peregrine's current *Antarctica and the High Arctic* brochure.

** From price is per person based on a twin share, main deck cabin on the 10-night *Antarctic Explorer* voyage departing 28 Feb 2008. Includes Aerolineas Argentinas economy class international flights from Sydney and pre-paid taxes, two nights' accommodation before the voyage (one night in Buenos Aires and one night in Ushuaia, including breakfast), internal flights and transfers in Argentina as well as fuel surcharge and all voyage inclusions (as detailed in Peregrine's current *Antarctica and the High Arctic* brochure).

For bookings, detailed Medical Challenges Series trip notes and Polar film evening dates, please contact your nearest Peregrine Travel Centre.

VICTORIA

PEREGRINE TRAVEL CENTRE
Level 3, 380 Lonsdale Street
Melbourne VIC 3000
Tel: 03 8601 4444
Email: sales@peregrineadventures.com

QUEENSLAND

PEREGRINE TRAVEL CENTRE
1st Floor, 132 Wickham Street
Fortitude Valley QLD 4006
Tel: 07 3854 1022
Email: peregrine@backtrack.com.au

SOUTH AUSTRALIA

PEREGRINE TRAVEL CENTRE
1st Floor, Scout Outdoor Centre
192 Rundle Street
Adelaide SA 5000
Tel: 08 8223 5905
Email: adventures@peregrinetravel.com.au

NEW SOUTH WALES

PEREGRINE TRAVEL CENTRE
Level 5, 38 York Street
Sydney NSW 2000
Tel: 02 9290 2770
Email: enq@peregrineadventures.com

WESTERN AUSTRALIA

PEREGRINE TRAVEL CENTRE
1st Floor, 862 Hay Street
Perth WA 6000
Tel: 08 9321 1259
Email: sales@peregrinewa.com.au



Printed by Finsbury Green Printing
using environmentally friendly printing
techniques. ISO14001 accredited.